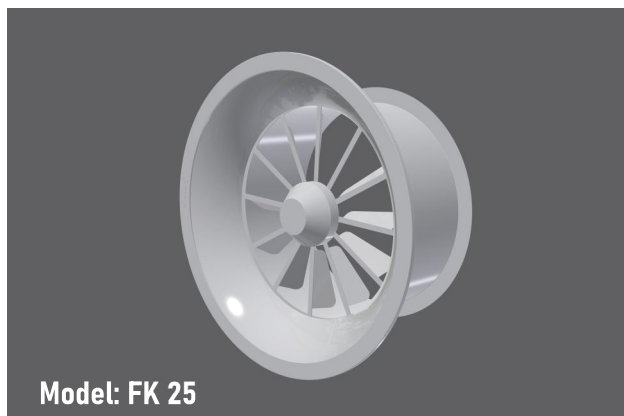


ROUND SWIRL DIFFUSER



Model:
FK 25

ROUND SWIRL DIFFUSER



TYPICAL APPLICATION

The swirl diffuser type is suitable for supply of cooled air with large temperature differential.

The air pattern is fixed. The special high induction swirl effect enables a significant number of air changes.

The very shallow in flow pattern also makes the diffuser suitable for somewhat lower spaces of ceiling as well.

Various models and sizes are available to custom or retrofit any given space on the ceiling.

MATERIAL

- Khung/nan: nhôm liền tấm dày 1.0mm mác A1060.

FINISH

- Màu tiêu chuẩn: sơn tĩnh điện trắng mờ mã RAL 9010 (có tùy chọn màu theo hệ RAL)

SIZE

- Tùy chọn (xem bảng)

FEATURES

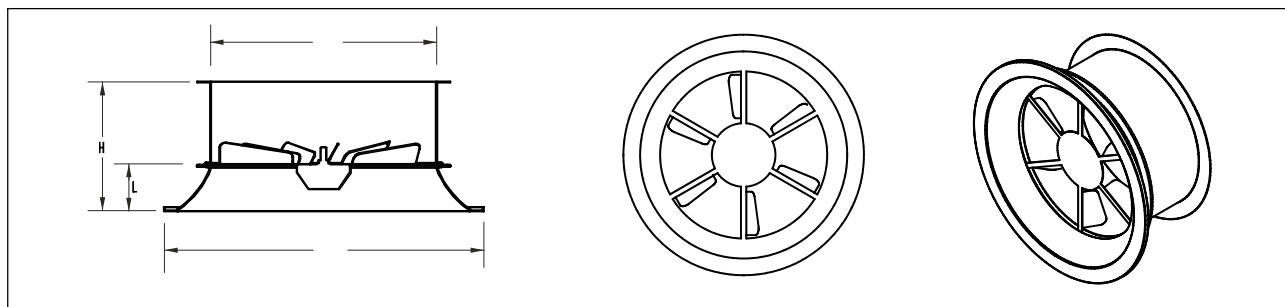
- The special high induction swirl effect enables a significant number of air changes.

APPLICATION

- Fixed air pattern
- Wall/ceiling mounted

ACCESSORIES

CONSTRUCTION



SIZE TABLE

(mm)

Prod. codes	Face size (ØD)	Neck size (ØN)	L	H
FK 25 200	300	200	43	148
FK 25 250	360	250	43	167
FK 25 315	465	315	67	208
FK 25 400	568	400	80	230
FK 25 450	598	450	65	380
FK 25 500	700	500	105	260
FK 25 630	877	630	130	300

ORDERING CODE

FK 25 - D - RAL
 Standard diffuser | Neck size | Colour: RAL codes

Example: **FK 25-400-M** = Round swirl diffuser FK25, neck size 400mm, white



PERFORMANCE DATA

Neck size (ØN)	Air Volume (m³/h)	Pressure drop (Pd)	Noise dB(A)
315	200	3.9	12
	300	8.6	21
	400	15.0	28
	500	24.0	31
	600	34.5	34
	700	47.0	38
	800	62.0	43
	1000	95.0	48
	1200	150.0	53
	1600	248.0	56
400	400	5.8	16
	500	9.0	24
	600	13.0	29
	700	17.7	32
	800	23.0	35
	1000	36.0	40
	1200	52.0	43
	1600	92.0	48
	2000	144.0	52
	2500	225.0	55
500	800	9.0	18
	900	11.4	22
	1000	13.85	28
	1250	21.7	33
	1600	35.6	37
	2000	55.8	40
	2500	87.2	44
	3000	126.0	48
	3200	142.0	52
	3500	171.0	56
630	1200	8.5	26
	1400	11.5	31
	1600	15.0	36
	2000	23.0	39
	2500	37.0	43
	3000	53.0	46
	3500	72.0	49
	4000	94.0	52
	4500	119.0	56
	5000	147.0	60

THROW @ Fresh air working condition

Air Volume (m³/h)	400	500	600	800	1000	1200	1600	2000	2500	3000	3500	5000	6000	7000	8000	9000	10000
315	3.5	4.3	5.2	7.1	8.8	10.4	13.3	-	-	-	-	-	-	-	-	-	-
Ø400	2.5	3.2	3.9	5.2	6.5	7.9	9.8	13.1	16.5	-	-	-	-	-	-	-	-
Ø500	-	-	-	3.4	4.6	6.4	7.8	9.7	-	-	-	-	-	-	-	-	-
Ø630	-	-	-	-	3.6	4.7	5.7	8.0	10.0	12.0	16.5	20.1	-	-	-	-	-